



TK International  
020 7794 8700  
www.t-k.co.uk

Residential Sales  
Residential Lettings  
Property Management

Sales Office:  
9 Heath Street  
Hampstead  
London NW3 6TP  
E: sales@t-k.co.uk

Lettings Office:  
16-18 Heath Street  
Hampstead  
London NW3 6TE  
E: lettings@t-k.co.uk

tk.international  
TK International  
TK International

Est.  
1998



## **Frognal Rise Hampstead Village NW3**

Proudly perched at the summit of what many regard as the most sought after mansion block in Hampstead Village, and spanning close to 3,000 sq ft, is this stunning three bedroom, three bathroom triplex penthouse apartment with three terraces offering expansive views across London from both north easterly and also south westerly aspects, plus the additional benefit of secure underground parking.

The living accommodation is arranged predominantly over two floors including a wonderfully spacious 35'5" x 35'3" reception room, plus an additional mezzanine gallery level, all providing excellent entertaining space and spectacular views over central London.

The apartment comprises two generous bedroom suites, both worthy of being called a principal bedroom, one of which provides direct access to it's own private 12'10" x 8'11" terrace. Both bedroom suites comprise their own ensuite amenities, and there is also a third double bedroom, complete with walk-in-wardrobe, and served by an adjacent shower room.

This striking penthouse apartment is located in highly coveted Mount Vernon, which enjoys access to a communal swimming pool and gymnasium along with stunning communal gardens and 24hr concierge. Mount Vernon is situated on Frognal Rise, within walking distance of the vast range of local amenities including trendy boutiques, restaurants and cafes along with Hampstead Underground Station (Northern Line).

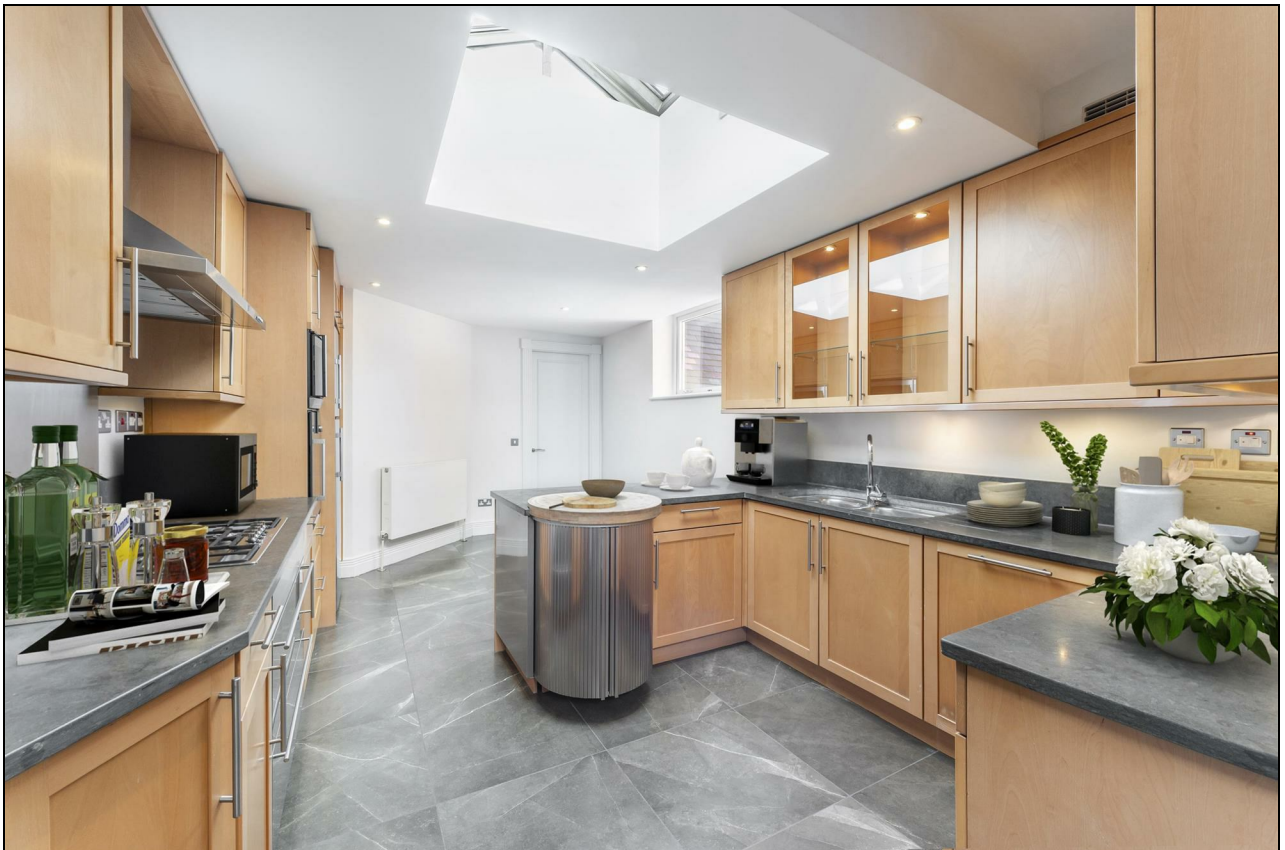
**Guide Price: £4,999,950**

**SOLE AGENT**

**Share of Freehold**















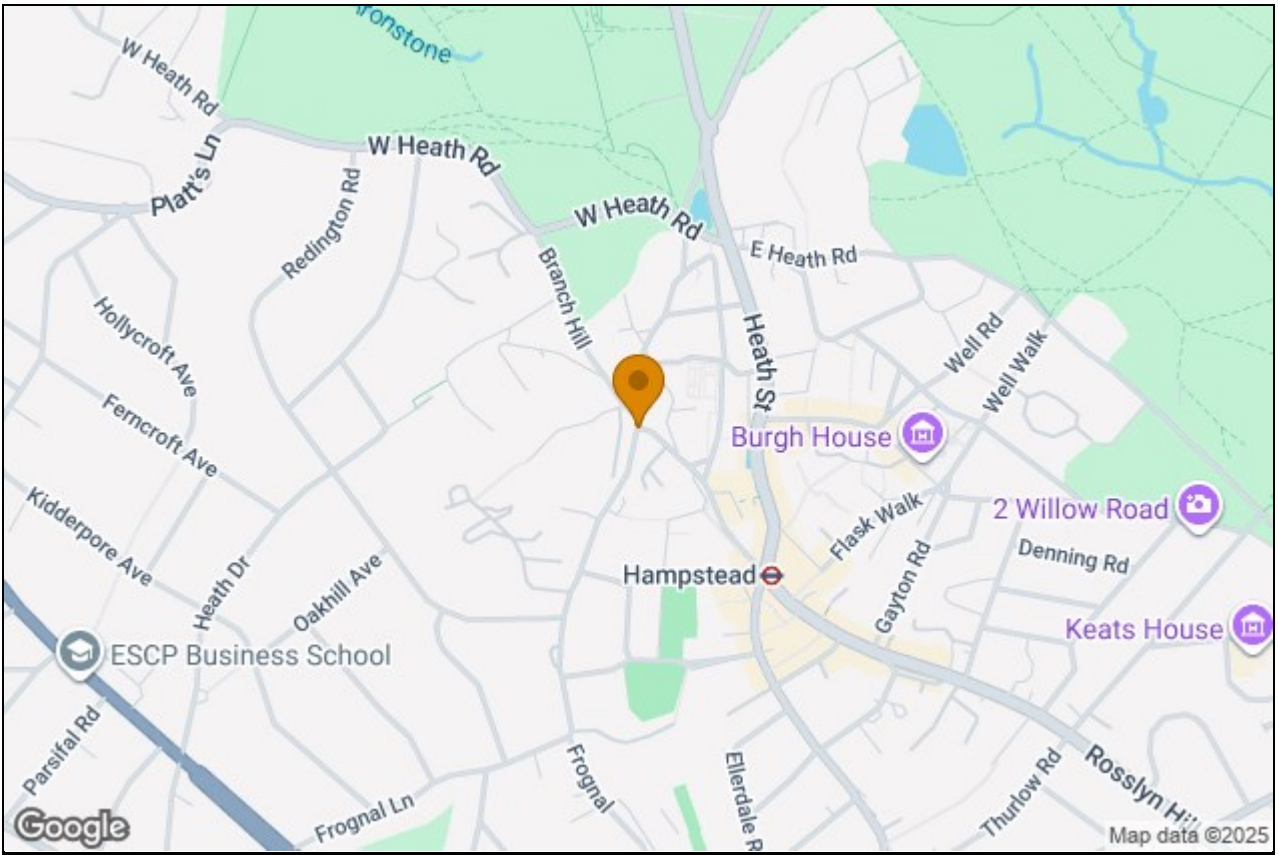














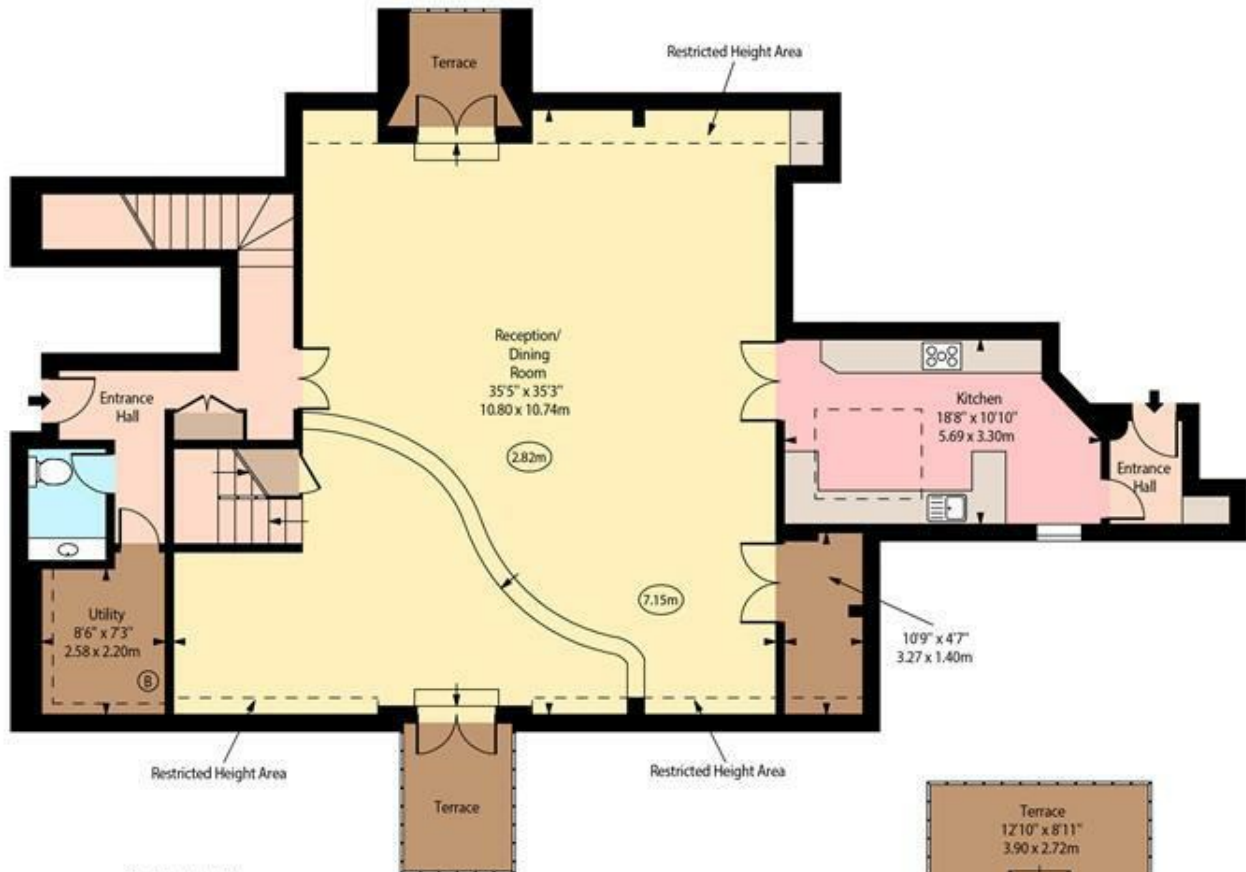
Gainsborough House,  
Frognaal Rise,  
Hampstead, NW3



○ - Ceiling Height



Eighth Floor



Seventh Floor



Sixth Floor

Approx Gross Internal Area 2885 Sq Ft - 268.02 Sq M

Approx. Floor Area Including Restricted Heights (Excluding Void) 3020 Sq Ft - 280.56 Sq M

For Illustration Purposes Only - Not To Scale  
www.goldens.co.uk  
Prepared for TK International  
Ref. No. 026968J